

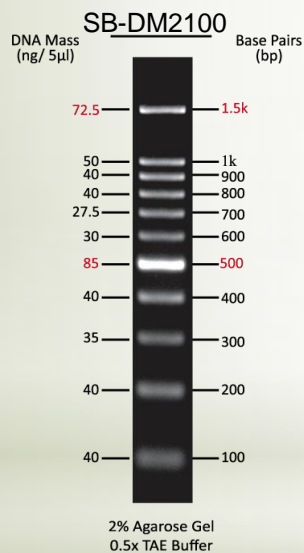


Promotion Code: ASL18-41

Promotion Valid Through: 01/31/2019

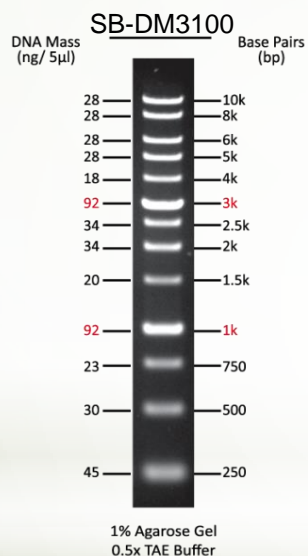
Cata NO.	Product Description	Price	
SB-DM2100	100bp DNA Ladder, 500ul x 1 per pack	\$50.00	\$35.00
SB-DM3100	1KB(0.25-10kb) DNA Ladder, 500ul x 1 per pack	\$50.00	\$35.00
SB-PM2500	3-Color Regular Range Protein Marker, 250ul x 2 per pack	\$95.00	\$80.00
SB-PM2600	3-Color High Range Protein Marker, 250ul x 2 per pack	\$99.00	\$80.00

100bp DNA Ladder



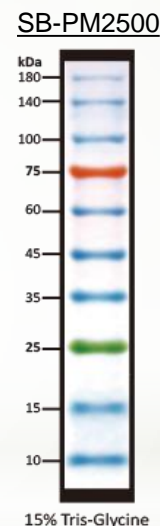
Range : 100 ~ 1,500 bp
Concentration : 50 µg/ 500 µl
Recommended loading volume : 5 µl/ well
Storage:
Protected from light
Room temperature ≥ 6 months
4°C ≥ 12 months , -20°C ≥ 36 months

1KB DNA Ladder



Range : 250 ~ 10,000 bp
Concentration : 50 µg/ 500 µl
Recommended loading volume : 5 µl/ well
Storage:
Protected from light
Room temperature ≥ 6 months
4°C ≥ 12 months , -20°C ≥ 36 months

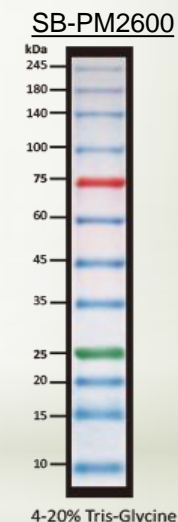
Regular Range Protein Marker



Quality Control

Under suggested conditions, SM-PM2500 ExcelBand 3-color Regular Range Protein Marker resolves 10 major bands in 15% SDS-PAGE (Tris-Glycine buffer) and after Western blotting to nitrocellulose membrane.
Recommended loading volume : 5 µl/ well
Storage: 4°C ≥ 3 months, -20°C ≥ 24 months

High Range Protein Marker



Quality Control

Under suggested conditions, SM-PM2600 ExcelBand 3-color High Range Protein Marker resolves 12 major bands in 15% SDS-PAGE (Tris-Glycine buffer) and after Western blotting to nitrocellulose membrane. **Recommended loading volume :** 5 µl/ well
Storage: 4°C ≥ 3 months, -20°C ≥ 24 months